

FREE ANIME FILM SHOWING

The remarkable life and works of Japanese artist and ukiyo-e painter Katsushika Hokusai, as seen from the eyes of his daughter, O-Ei. An opportunity to discover how life was in Tokyo back in 1814 during the Edo period.

WEDNESDAY 30 NOVEMBER 2016 19:00

FREE ENTRANCE RESERVATION REQUIRED:
culture.embjapan@lx.mofa.go.jp - 46 41 51 43

CINÉ UTOPIA 16, avenue de la Faïencerie
L-1510 Luxembourg (Limpertsberg)

93 min - Japan 2015

MISS 百日紅 HOKUSAI



Ambassade du Japon
au Luxembourg



*in Japanese
with English
subtitles*



**A SUMPTUOUS,
SENSUOUS ANIMATED WORK OF ART!**

- *Los Angeles Times*

GORGEOUS! A SMALL POETIC WONDER!

- *The Hollywood Reporter*

CRITICS' PICK! EXTRAORDINARY!

ENCHANTING! THOUGHT PROVOKING!

- *New York Times*

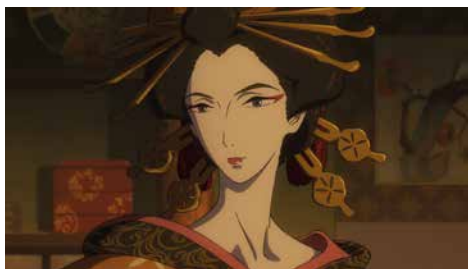
The Japanese Embassy in Luxembourg organizes a free anime film showing of

« **MISS HOKUSAI** »

From award-winning director Keiichi Hara (*Colorful*) and Japanese powerhouse Production I.G (creators of *Ghost in the Shell*) comes a remarkable story of the daughter behind one of history's most famous artists.



As all of Edo flocks to see the work of the revered painter Hokusai, his daughter O-Ei toils diligently inside his studio. Her masterful portraits, dragons and erotic sketches – sold under the name of her father – are coveted by upper crust Lords and journeyman print makers alike. Shy and reserved in public, in the studio O-Ei is as brash and uninhibited as her father, smoking a pipe while sketching drawings that would make contemporary Japanese ladies blush. But despite this fiercely independent spirit, O-Ei struggles under the domineering influence of her father and is ridiculed for lacking the life experience that she is attempting to portray in her art. Miss Hokusai's bustling Edo (present day Tokyo) is filled with yokai spirits, dragons, and conniving tradesmen, while O-Ei's relationships with her demanding father and blind younger sister provide a powerful emotional underpinning to this sumptuously-animated coming-of-age tale.



http://www.lu.emb-japan.go.jp/index_f.html